

TRI-STATE Western Lake Erie Basin

Phosphorus Reduction Initiative

The Tri-State Western Lake Erie Basin Phosphorus Reduction Initiative

The Tri-State Western Lake Erie Basin Phosphorus Reduction Initiative is a multi-state project to protect the western basin of Lake Erie by reducing phosphorus (P) and sediment loading to decrease Harmful Algal Blooms (HABs). Project partners have identified Natural Resources Conservation Service (NRCS) conservation practices and innovative demonstration practices that farmers can implement using Environmental Quality Incentive Program (EQIP) and Agricultural Conservation Easement (ACEP) funds to protect soil health, water quality, and prevent fish and wildlife degradation. The Western Lake Erie Basin Regional Conservation Partnership Program (RCP) project was awarded \$17.5 million. Ohio will receive about \$12.25 million, which is split between EQIP, ACEP and technical assistance.



OHIO'S PRIORITY PRACTICE LIST

Animal Waste Storage Structure

- ▶ Install animal waste storage structures to allow producers longer storage and allow for appropriate waste application.

Nutrient Placement

- ▶ Place all phosphorus under the soil surface using variable rate technology; incorporation is not included in this practice.

Cover Crops

- ▶ Plant an over-wintering cover crop single species or multiple species mix with at least one over-wintering species.

Crop rotation including a small grain followed by a multi-species mix cover crop

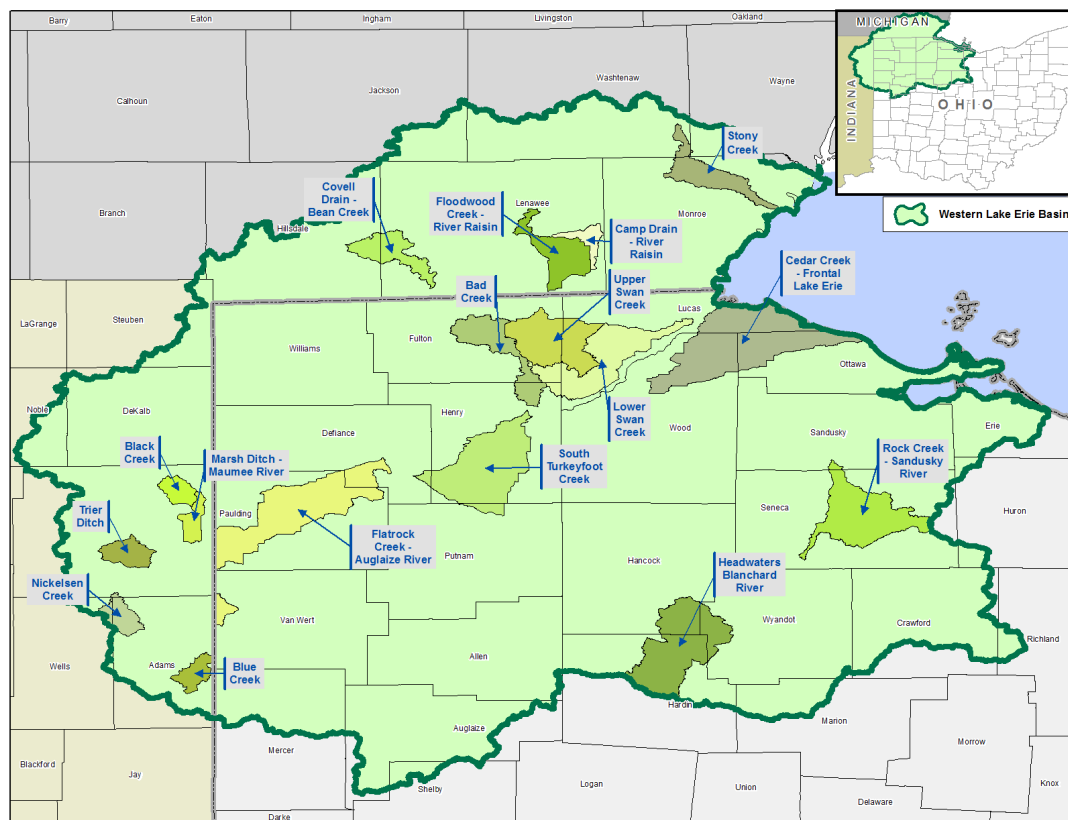
- ▶ Add wheat or small grain to the rotation that has not been part of the rotation for the past 5 years or more.

Water Control Structures and Drainage Water Management

- ▶ Install a controlled drainage structure and manage it for water quality.

Water Quality Inlets/Blind Inlets

- ▶ Replace open inlets/risers with underground outlets supporting water quality.



Program Objectives

The Tri-State Western Lake Erie Basin Phosphorus Reduction Initiative will help to reduce sediment and nutrient loading into the western basin of Lake Erie, with an emphasis on reducing total and dissolved reactive phosphorus to decrease the threat of HABs. The specific resource concerns include water quality, water quantity, soil health, and fish and wildlife habitat.

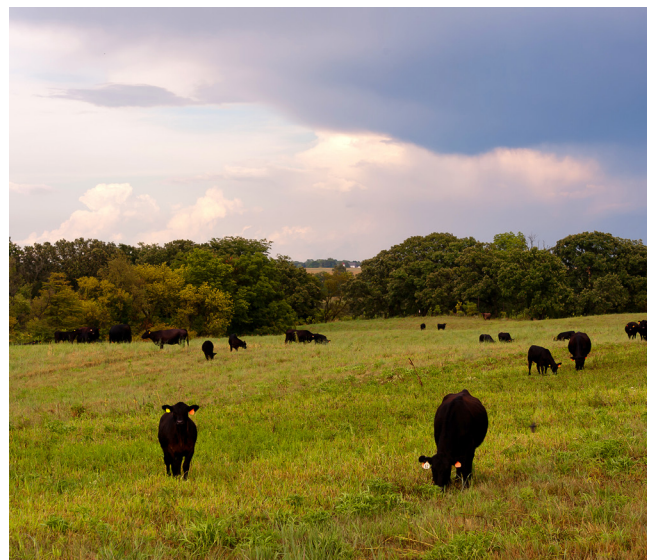
Application Requirements

Agricultural producers in the Western Lake Erie Basin are eligible to apply.

Priority Consideration

Participants in the following watersheds will be given priority consideration for funding:

- ***Bad Creek, Upper Swan Creek and Lower Swan Creek***
- ***Headwaters Blanchard River***
- ***Cedar Creek-Frontal Lake Erie***
- ***Flatrock Creek-Auglaize River***
- ***South Turkeyfoot Creek***
- ***Rock Creek-Sandusky River***



2015 Application Dates

July 1 - July 17

Contact Information

Please contact your local Soil and Water Conservation District with any questions.

Project Website: www.wleeb.org

Name:

Phone:

Website:

Email: