



INTRODUCTION

The Western Lake Erie Basin (WLEB) Partnership is a tri-state partnership dedicated to enhancing multi-purpose projects that improve land and water resource management in the basin and promote a healthy productive watershed. To achieve this mission, the WLEB created strategic objectives to address a growing number of water quality concerns - such as, nonpoint source pollution, toxics, hydrologic management, dredging, and sedi-

mentation. This factsheet, then, highlights multi-year monitoring efforts from Federal, State, and local sources, as well as, non-governmental organizations (NGO) when available. It displays streamflow and water quality data in both spatial and graphical formats - providing an informative view of the historical water data in the Maumee River basin.

What is the Credible Data Program?

In an effort to increase the information base available for enhancing, improving, and maintaining water resource quality, some states (Ohio and Indiana) have independently established credible data programs to define 3 levels of surface water quality data:

Level 1 data is collected by the numerous volunteer stream and lake monitoring programs. Data at this level are used for purposes of awareness and educational activities.

Level 2 data helps with the initial screening of water quality problems to determine if additional studies are needed.

Level 3 data are the highest level and help with a variety of regulatory and management decisions.

DATA SOURCES

NGO water data are represented in the WLEB by Heidelberg University's National Center for Water Quality Research (NCWQR) whose program has been designed to provide accurate and long-term pollutant loading data for Ohio's major tributaries to Lake Erie.

- An online user's guide and access to the data are available at :
<http://www.heidelberg.edu/wq/tributarydata/download>.

State water data are represented in the WLEB by the: Ohio Environmental Protection Agency (OEPA) Division of Surface Water who conducts biological and chemical water quality monitoring to assess the quality of Ohio's lakes and streams.

- More information can be obtained at:
<http://www.epa.state.oh.us/dsw>

Michigan Department of Natural Resources and Environment (DNRE) who oversees the protection of the quality of surface waters through monitoring water and sediments.

- More information can be obtained at:
<http://www.michigan.gov/dnre>

Michigan Department of Agriculture (MDA) helps in the conservation and development of water resources.

- More information can be obtained at:
<http://www.michigan.gov/mda>

Federal water data are represented in the WLEB by the: U.S. Geological Survey, Water Resources Discipline who provides reliable and timely water resource information.

- Access to the data are available at:
<http://waterdata.usgs.gov/nwis>

U.S. Environmental Protection Agency (USEPA) who protects and restores watersheds and aquatic ecosystems.

- More information can be obtained at:
<http://www.epa.gov/OW/>

Contact Us

Western Lake Erie Basin Partnership

Website: wleb.org

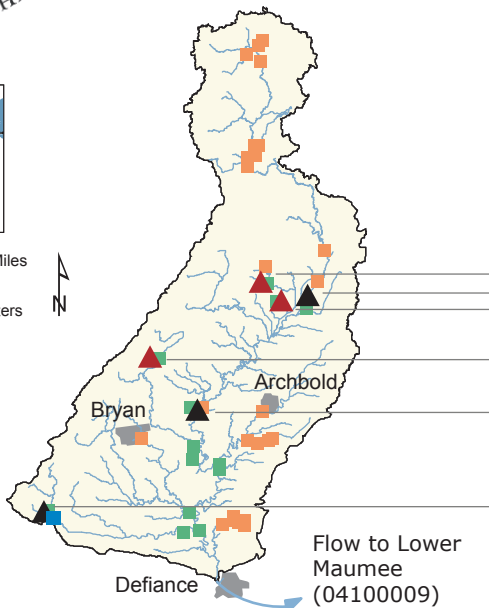
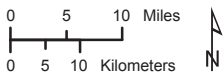
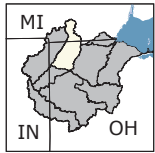
Email: wlehelp@wleb.org



Historical Assessment of Streamflow and Water Quality Activities

Bean Creek / Tiffin River Watershed (04100006)

2009



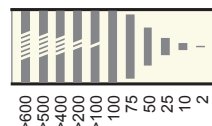
EXPLANATION

This factsheet highlights multi-year monitoring efforts from Federal, State, local and academic sources, as well as non-governmental organizations. It displays streamflow and water quality monitoring activity in both spatial and graphical formats; providing an informative view of historical water data in the Maumee River basin.

FLOW NETWORK

- ▲ Daily Discharge Gage
- ▲ Stage or Peak Streamflow Only

SAMPLING FREQUENCY (Samples per year)



WATER QUALITY SAMPLING NETWORK

- Federal: U.S. Geological Survey
U.S. Environmental Protection Agency
- State: Ohio Environmental Protection Agency
Michigan Dept. of Natural Resources and Environment
- Local/Academia: Heidelberg University
- NGO*: none

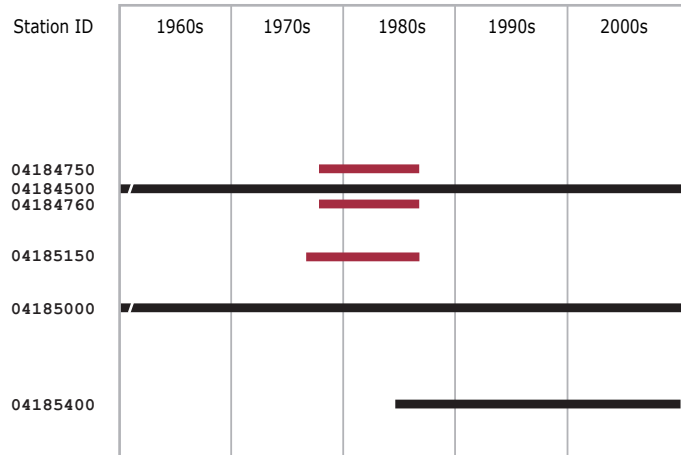
GAGE NETWORK SCHEMATIC

Station ID	Station Name	Flow Network
04184500	Bean Creek at Powers, OH	
04184750	Spring Creek at Fayette, OH	
04184760	Bean Creek tributary near Fayette, OH	
04185000	Tiffin River at Stryker, OH	
04185150	Beaver Cr. tributary near Montpelier, OH	
04185440	Unnamed trib. to Lost Cr. near Farmer, OH	

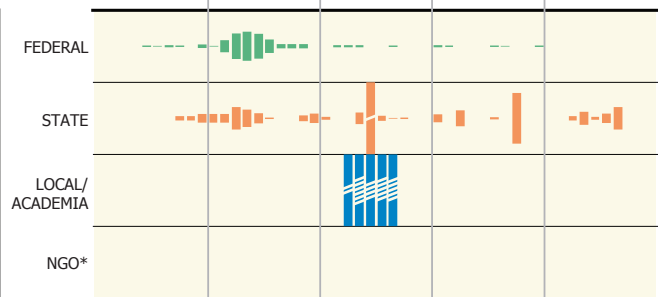
FLOW TO LOWER MAUMEE (04100009)

PERIOD OF RECORD

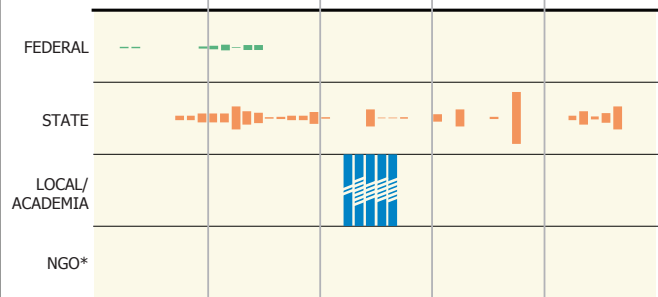
Daily Discharge, Stage or Peak Streamflow Gages



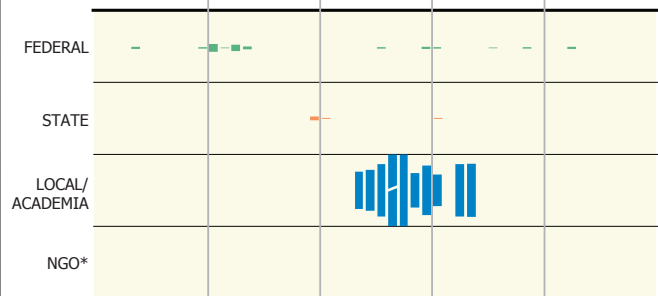
NUTRIENTS



SEDIMENTS



PESTICIDES



1960s 1970s 1980s 1990s 2000s

*(NGO) Non-Governmental Organization