



## INTRODUCTION

The Western Lake Erie Basin (WLEB) Partnership is a tri-state partnership dedicated to enhancing multi-purpose projects that improve land and water resource management in the basin and promote a healthy productive watershed. To achieve this mission, the WLEB created strategic objectives to address a growing number of water quality concerns - such as, nonpoint source pollution, toxics, hydrologic management, dredging, and sedi-

mentation. This factsheet, then, highlights multi-year monitoring efforts from Federal, State, and local sources, as well as, non-governmental organizations (NGO) when available. It displays streamflow and water quality data in both spatial and graphical formats - providing an informative view of the historical water data in the Maumee River basin.

### What is the Credible Data Program?

In an effort to increase the information base available for enhancing, improving, and maintaining water resource quality, some states (Ohio and Indiana) have independently established credible data programs to define 3 levels of surface water quality data:

**Level 1** data is collected by the numerous volunteer stream and lake monitoring programs. Data at this level are used for purposes of awareness and educational activities.

**Level 2** data helps with the initial screening of water quality problems to determine if additional studies are needed.

**Level 3** data are the highest level and help with a variety of regulatory and management decisions.

## DATA SOURCES

**Local/Academia** water data are represented in the WLEB by the *City of Fort Wayne, Indiana*, who collects water quality data in an effort to improve river water quality.

■ More information can be obtained at:  
<http://www.cityoffortwayne.org>

**State** water data are represented in the WLEB by the: *Ohio Environmental Protection Agency (OEPA) Division of Surface Water* who conducts biological and chemical water quality monitoring to assess the quality of Ohio's lakes and streams.

■ More information can be obtained at:  
<http://www.epa.state.oh.us/dsw>

*Indiana Department of Environmental Management (IDEM)* who provides the water quality and hydrological data required for the assessment of Indiana's waters.

■ More information can be obtained at:  
<http://www.in.gov/idem/index.htm>

**Federal** water data are represented in the WLEB by the: *U.S. Geological Survey, Water Resources Discipline* who provides reliable and timely water resource information.

■ Access to the data are available at:  
<http://waterdata.usgs.gov/nwis>

*U.S. Environmental Protection Agency (USEPA)* who protects and restores watersheds and aquatic ecosystems.

■ More information can be obtained at:  
<http://www.epa.gov/OW/>

### Contact Us

**Western Lake Erie Basin Partnership**

**Website:** [wleb.org](http://wleb.org)

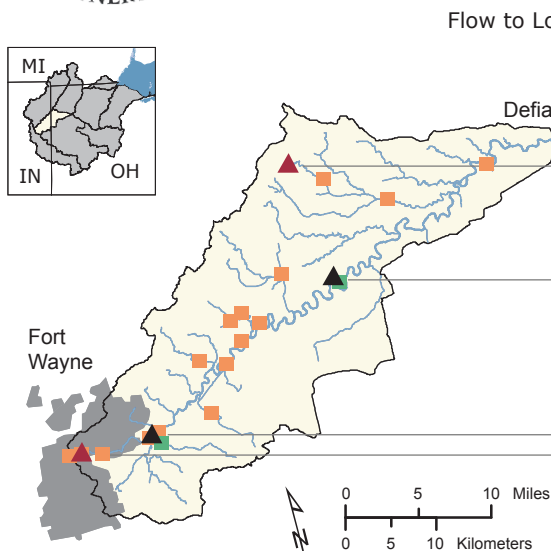
**Email:** [wlehelp@wleb.org](mailto:wlehelp@wleb.org)



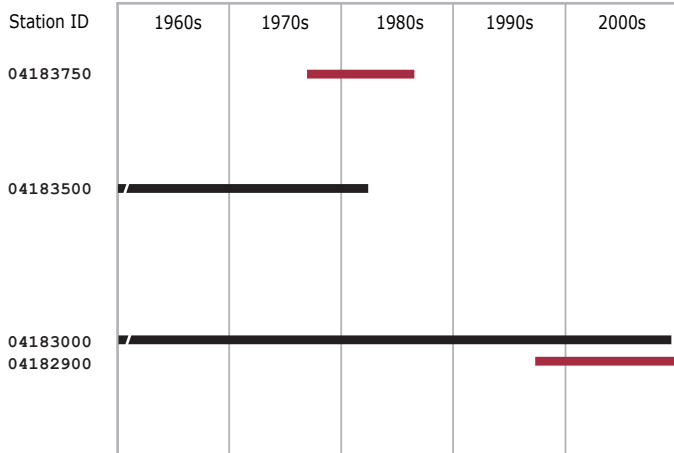
# Historical Assessment of Streamflow and Water Quality Activities

Upper Maumee River Watershed (04100005)

2009



## PERIOD OF RECORD Daily Discharge, Stage or Peak Streamflow Gages



## EXPLANATION

This factsheet highlights multi-year monitoring efforts from Federal, State, local and academic sources, as well as non-governmental organizations. It displays streamflow and water quality monitoring activity in both spatial and graphical formats; providing an informative view of historical water data in the Maumee River basin.

### FLOW NETWORK

- ▲ Daily Discharge Gage
- ▲ Stage or Peak Streamflow Only

### SAMPLING FREQUENCY (Samples per year)



### WATER QUALITY SAMPLING NETWORK

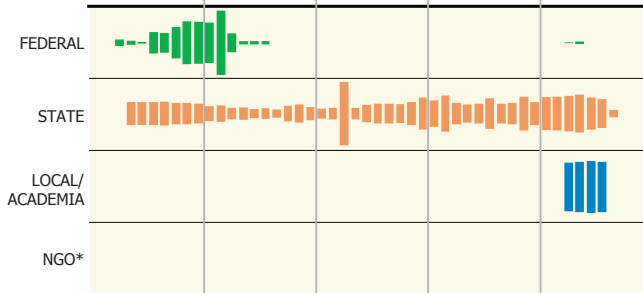
- █ Federal: U.S. Geological Survey  
U.S. Environmental Protection Agency
- █ State: Ohio Environmental Protection Agency  
Indiana Dept. of Environmental Mgmt.
- █ Local/Academia: City of Fort Wayne
- █ NGO\*: none

### GAGE NETWORK SCHEMATIC

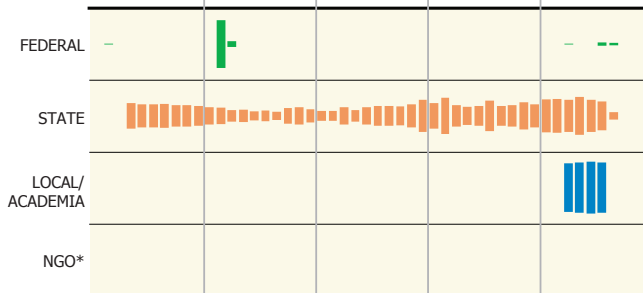
Station ID	Station Name	Flow Network
04182900	Maumee River at Fort Wayne, IN	
04183000	Maumee River near New Haven, IN	
04183500	Maumee River at Antwerp, OH	
04183750	Racetrack Run at Hicksville, OH	

\*(NGO) Non-Governmental Organization

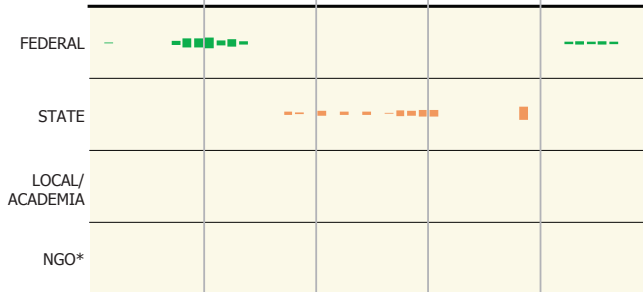
## NUTRIENTS



## SEDIMENTS



## PESTICIDES



1960s 1970s 1980s 1990s 2000s