

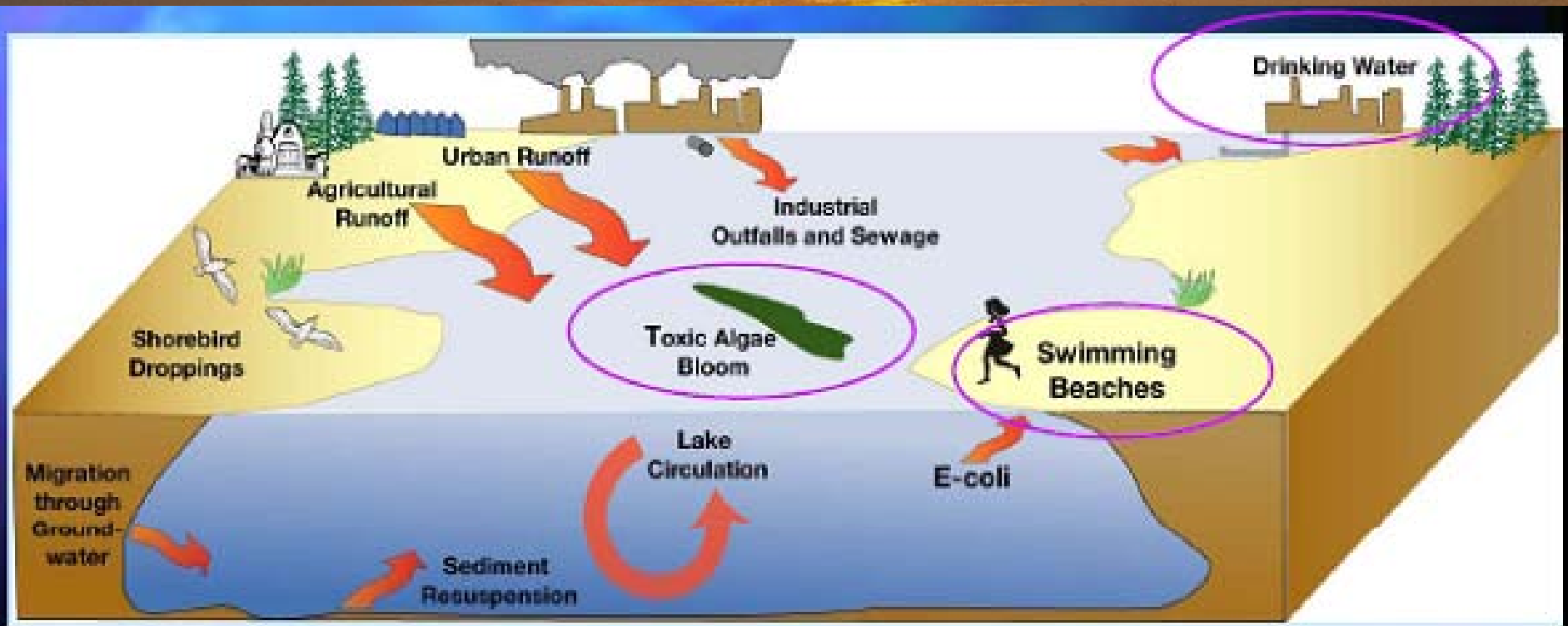
A sunset over a body of water with a long pier extending into the distance. The sun is low on the horizon, casting a golden glow across the sky and water. The pier is silhouetted against the bright sky.

Linking The Land and The Lake

*Role of The LaMP and The International
Joint Commission In Advancing
Watershed Management*

By
John E. Gannon
International Joint Commission
Windsor, Ontario
For
WQB/Western Lake Erie Conference
Maumee Bay, Ohio
March 10-12, 2009

Factors Contributing to Nearshore Water Quality in the Great Lakes



**Climate – Meteorology – Hydrology –
Hydrodynamics – Biology/Chemistry**

A sunset over a body of water with a pier in the distance. The sun is low on the horizon, casting a golden glow across the sky and water. The pier extends into the water, and the overall scene is serene and atmospheric.

Boundary Waters Treaty (1909)

- Water levels and flows
- Pollution across international boundary
- Reference process

Great Lakes Water Quality Agreement

- 1972-Eutrophication control
- 1978-Toxic substances, ecosystem approach
- 1987-Remedial Action Plans (RAPs) in Areas of Concern (AOCs) and Lakewide Management Plans (LaMPs)
- 2006-2007-Under review for possible revision

Great Lakes Water Quality Agreement

- Purpose: “Restore and maintain the chemical, physical, and biological integrity of the Waters of the Great Lakes Basin Ecosystem”

Annex 2: Remedial Action Plans (RAPs) and Lakewide Management Plans (LaMPs)

- AOC's-Beneficial Use Impairments – 14
- LaMP's-Critical Pollutants

Annex 13: Pollution From Non-Point Sources

IJC Special Report on Agreement Review

- Affirm ecosystem approach with focus on Great Lakes water quality
- Recommend watershed as operational framework
- Recommend Binational Action Plan separate from but attached to the Agreement

<http://www.ijc.org/rel/pdf/advicefinalwc.pdf>

IJC Special Report on Agreement Review

“The Commission is encouraged that several of the LaMPs have moved beyond a focus on critical pollutants and have adopted an ecosystem approach, including the watershed perspective, in their planning activities. In the context of accelerating progress in protecting and restoring the waters of the Great Lakes basin ecosystem, LaMPs have the potential to be the core instrument for consolidation and integrating the components of the Binational Action Plan, and engaging a broader array of governments, agencies and programs to implement the Plan.”

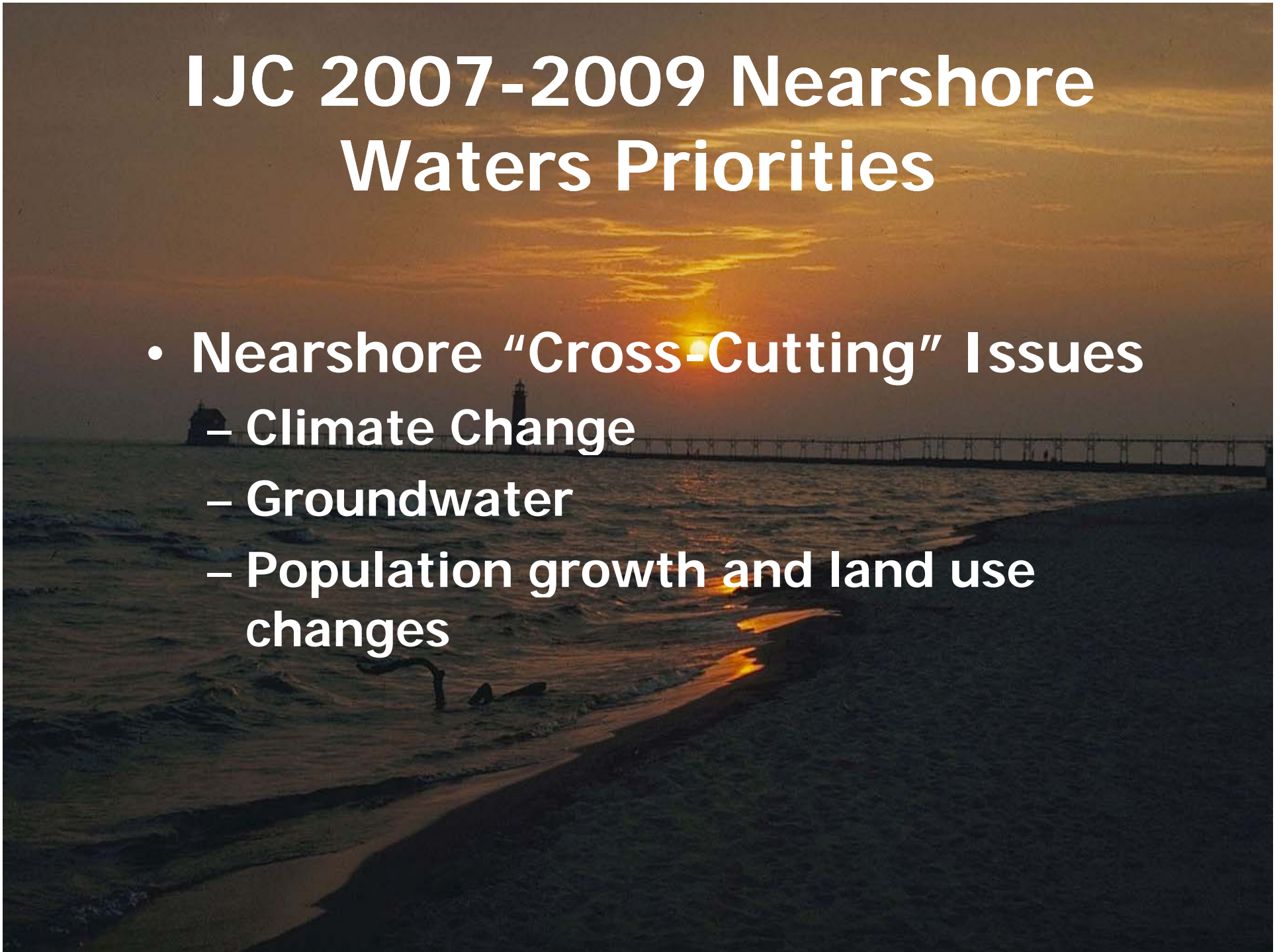
(P.23) <http://www.ijc.org/rel/pdf/advicefinalwc.pdf>

IJC 2007-2009 Nearshore Waters Priorities

- **Nearshore Waters Adaptive Management Framework**
 - Scoping Session, November, 2007
 - Expert Consultation, March, 2008
- **Nearshore Issues**
 - Eutrophication
 - Beach Closings
 - Fish Consumption Advisories
 - Emerging Chemicals of Concern
 - Aquatic Invasive Species

IJC 2007-2009 Nearshore Waters Priorities

- Nearshore “Cross-Cutting” Issues
 - Climate Change
 - Groundwater
 - Population growth and land use changes



IJC Letters to Governments on Agreement Review

“Despite their vital importance, the current Agreement contains few specifics on nearshore waters. The Commission views this as an issue significant enough to warrant opening the Agreement on this basis alone for substantive revisions or replacement to provide the means to address the critical science, resource management, governance and policy needs related to the nearshore waters.”

July 12, 2007

Nearshore Framework for the 2007-2009 Priorities

- **Nearshore problems are serious and in some cases deteriorating**
- **Many nearshore issues have significant binational dimensions**
- **Factors influencing nearshore problems include runoff from land surfaces, invasive species, air deposition, climate change, ground water, shoreline hardening, and water level controls**

Nearshore Framework for the 2007-2009 Priorities

- A comprehensive, systematic, and adaptive approach is needed which includes identifying outcomes, assessment of condition, problem identification, diagnosis of causes, and development/ implementation of remedial and protective measures.
- The overall approach requires attention to science, monitoring, governance, resource requirements and policy

A sunset scene over a body of water, likely a lake or bay. The sun is low on the horizon, casting a golden glow across the sky and reflecting on the water. A long pier or bridge structure extends from the left side towards the right, silhouetted against the bright sky. The foreground shows the dark, rippling water of the lake.

IJC 2007-2009 Nearshore Priorities Target Dates

- **Boundary Waters Treaty
Centennial Celebration**

Niagara Falls, Ontario

June 13, 2009

- **Great Lakes Biennial Meeting**

Windsor, Ontario

October 6-7, 2009